

Supplementary materials

Melanocyte

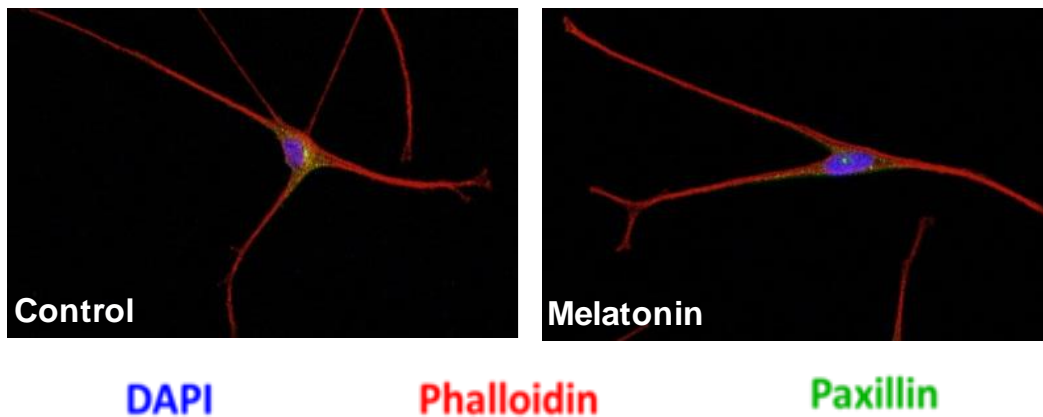


Fig. S1. Effects of melatonin on cytoskeleton remodeling melanocytes.

Confocal imaging of melanocytes treated with or without 1m M of melatonin for 48h. F-actin was visualized by phalloidin (red), focal adhesions by paxillin (green) and nuclei by DAPI (blue) antibody staining. The morphological and molecular arrangements of melanocytes were not affected by melatonin. Experiments were done in duplicate and were repeated twice.

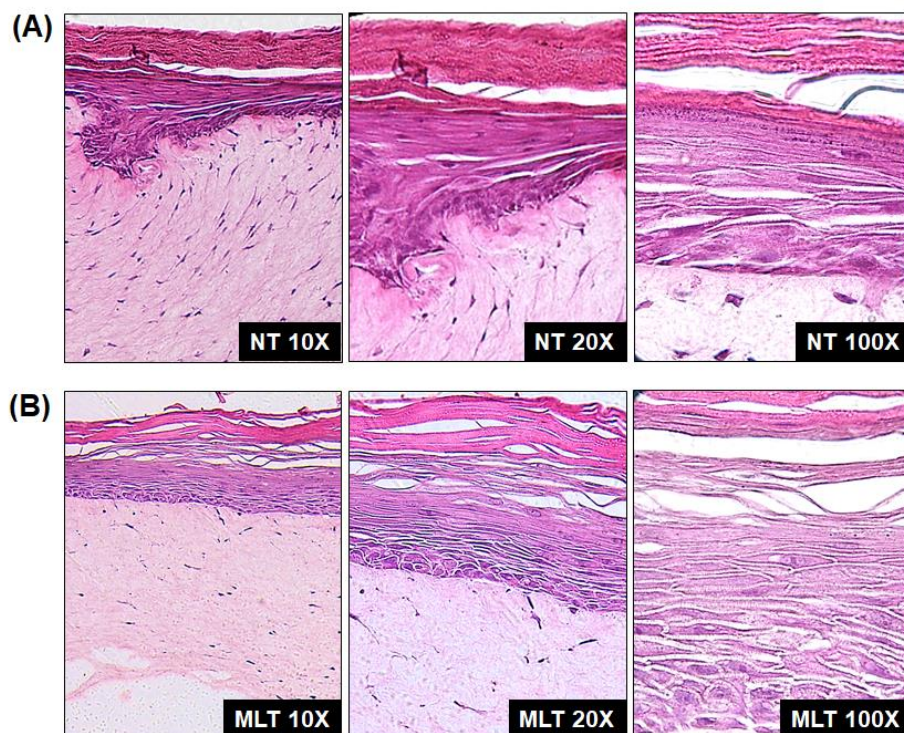


Fig. S2. Histological analysis of reconstructed skin under melatonin treatment.

Bright light microscopy image of skin reconstructs tissue stained by hematoxylin-eosin histological staining after 48h of melatonin treatment. We evaluated the organization of the stratified keratinized squamous epithelium of the reconstructed skin treated with or without melatonin and without the addition of melanoma. NT – non-treated; MLT – melatonin. Experiments were done in triplicate and were repeated twice.